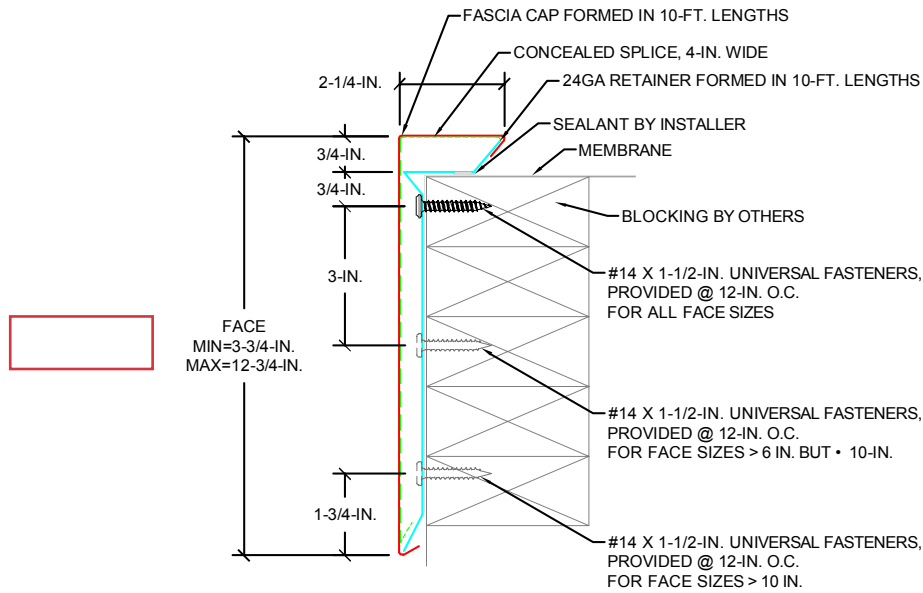


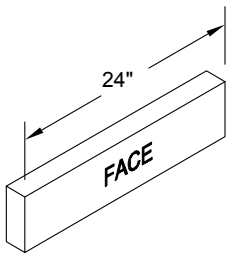
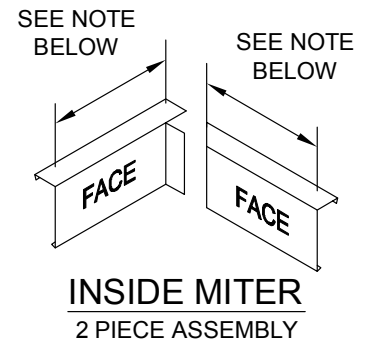
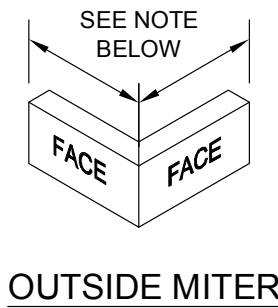
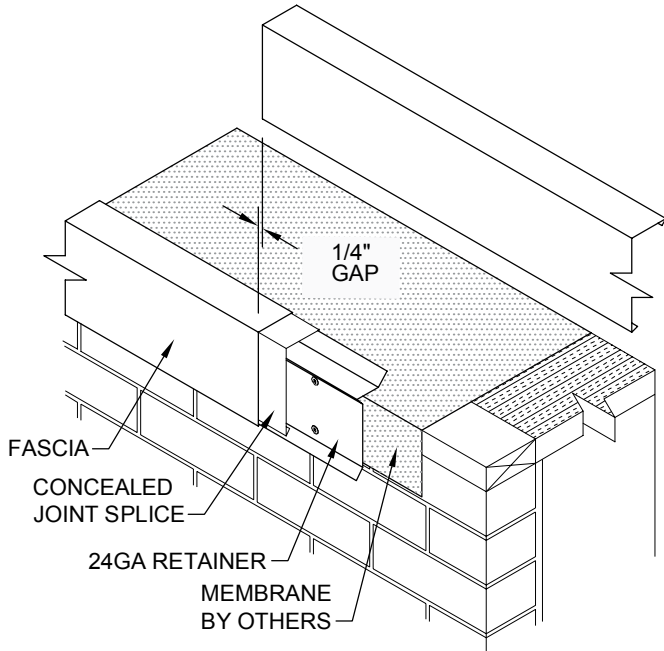
ORDER SPECIFICATION FORM

ANSI/SPRI/FM4435/ES-1 TEST PRESSURES UP TO 150 PSF (HORIZONTAL)

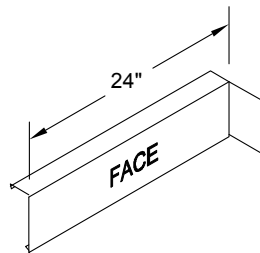


PRE-DRILL WITH 3/16-IN. DRILL BIT FOR MASONRY CONDITIONS.
 CONTACT US FOR APPROPRIATE RECOMMENDATIONS NEEDED TO MEET/EXCEED
 ANSI/SPRI/FM4435/ES-1 DESIGN CRITERIA

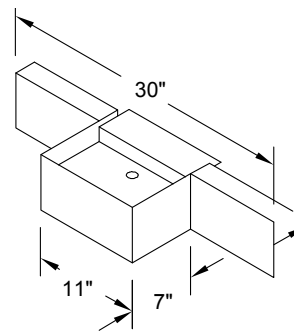
| APPROVALS | | COVER MATERIAL | THICKNESS | COVER FINISH |
|--|---|---|--|---|
| <div style="border: 1px solid black; padding: 2px; width: fit-content;">ANSI/SPRI/FM 4435 /ES-1 TESTED</div> | | Aluminum Galvanized Steel Stainless Steel | 24Ga. 22Ga. .040 in. .050 in. | Mill Prefinished Kynar Premium Prefinished Kynar Post Finished Kynar Prefinished Anodized Post Finished Anodized |
| QUANTITY | | ACCESSORY TYPE | | |
| _____ | Straight Length | Welded | | |
| _____ | Total Miters (Inside: _____ / Outside: _____) | Folded | | |
| _____ | Total End Caps (Left: _____ / Right: _____) | | | |
| _____ | Total End Terms (Left: _____ / Right: _____) | | | |
| _____ | Radius Notched | | | |
| _____ | Radius to Straight Miter Notched | | | |
| _____ | Radius End Cap | | | |
| _____ | Vault Welded | | | |
| _____ | Vault to Straight Miter Welded | | | |
| _____ | Vault End Cap | | | |
| _____ | Z-Miter | | | |
| _____ | Ridge Miter | | | |
| _____ | Valley Miter | | | |
| _____ | Sumps | | | |
| _____ | Spillouts | | | |
| FACE HEIGHT | | CUSTOMER APPROVAL | | |
| _____ | COLOR | Approved for Fabrication Approved with Changes Not Approved | | |
| _____ | _____ | _____ Authorized Customer Signature | | |
| _____ | _____ | _____ Title | | |
| _____ | _____ | _____ Job Name: | | |
| _____ | _____ | _____ Project Location: | | |
| _____ | _____ | _____ Customer: | | |
| _____ | _____ | _____ Representative: | | |
| _____ | _____ | _____ Date | | |



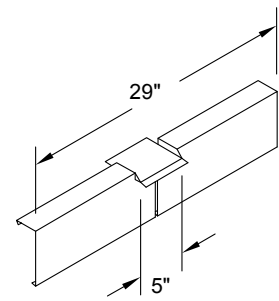
END CAP
LEFT HAND SHOWN



END TERM
RIGHT HAND SHOWN



SUMP
2 PIECE ASSEMBLY



SPILLOUT
3 PIECE ASSEMBLY

Standard fascia miter leg lengths: 12" nominal
Standard fascia miter angle is 90°

For special miter requirements, attach sketches or consult manufacturer for assistance.